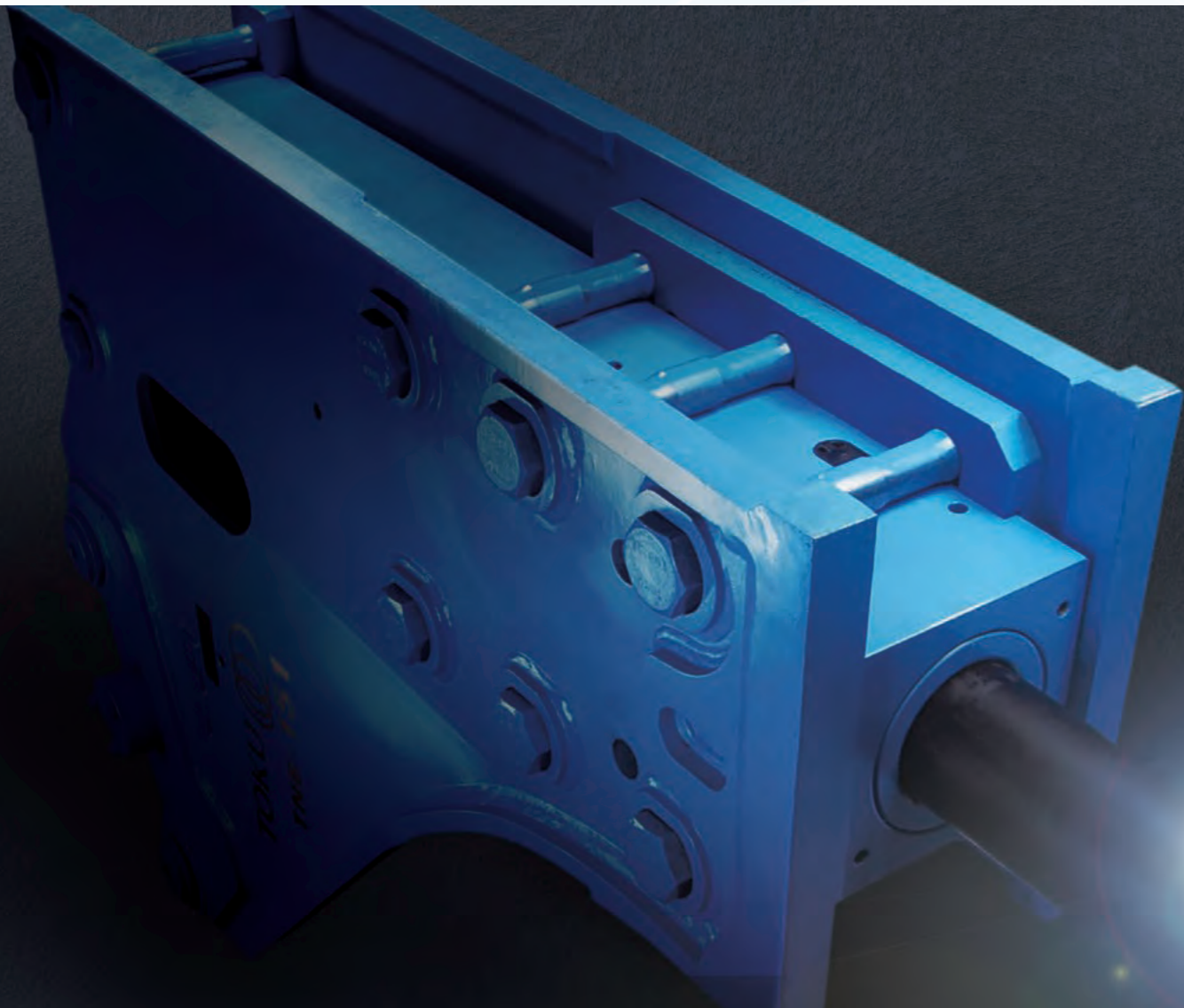


TOKU PNEUMATIC

COMPANY PROFILE



We will challenge the globalized market with “Quality-First Policy.”



The dream of “becoming the No.1 pneumatic tool manufacturer in the Orient”, drawn in 1937, has realized today by becoming one of the world-leading pneumatic tool manufacturers. We believe this is the result of our continuous efforts to improve our products by catching the needs of the market constantly while we adhere to the spirit of Quality-First Policy since our founding.

We have also introduced and automated the latest technology and equipment in production and have made our best efforts to balance the three elements of quality, price, and supply. All major manufacturing facilities have obtained ISO9000 series and ISO14000 series including us.

Furthermore, we continuously improve our technology, such as establishing an educational facility “TERAKOYA” in the main factory with the aim of inheritance and accumulation of technical capabilities.

For markets and products that are becoming more global in the future, TOKU will continue to take pride in “MADE IN JAPAN” while inheriting the manufacturing tradition since our founding. We strive to develop products that customers would like to own, and we will continue our efforts in the upcoming future. We appreciate your continued support.



President **Kazuyoshi Tsuge**



This is Toku's Corporate symbol

This is Toku's Corporate symbol "Moving Circle".

This identity symbolizes the power and amplification for growth and development.

Toku will use this mark as a flagship symbol to continue to challenge for the future.

HYDRAULIC PRODUCTS



HYDRAULIC BREAKERS

Since succeeding in commercializing a hydraulic breaker in 1982, TOKU's hydraulic breaker has a simple structure, without a built-in accumulator, and excellent durability has been highly evaluated for its reliability and stability. TOKU has a wide range of hydraulic breakers, and we have a lineup of products according to the work environment, excavator size, such as anti-vibration and silent models to meet market needs. We are also focusing on the development of the next-generation breakers that are ergonomic and friendly to the environment with lower noise and vibration.



PNEUMATIC PRODUCTS



CONSTRUCTION & MINING

For TOKU, which originated from the manufacture of air tools for coal mines, air tools for civil engineering and construction are at the center of the products. For applications from civil engineering to mining, we meet all the needs of the market with products such as chipping hammers, concrete breakers and rock drills. In particular, the market demand for anti-vibration and soundproofing has been increasing recently, and TOKU is focusing on commercializing it in response to such market demands.



PNEUMATIC PRODUCTS



AUTOMOTIVE & GENERAL INDUSTRY

Today, TOKU is highly regarded for its product performance in the fields of automotive aftermarket and general industry. In particular, the impact wrench has a clutch with excellent durability and function, and we have a full lineup of products suitable for various applications. We also supply a wide range of products that meet customer needs, such as ratchet wrenches, drills, hammers, sanders, and grinders. TOKU air tools are used in a wide range of applications including the automotive aftermarket, general industry. Impact wrenches are also used in various assembly plants.



PNEUMATIC PRODUCTS



MATERIAL HANDLING

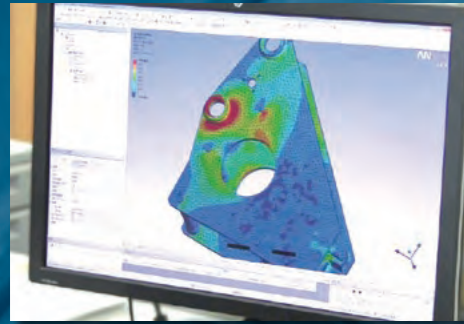
Material handling products are indispensable in all industrial fields such as lifting, lowering and transporting goods. The TOKU air chain block has more than 60 years of experience in improving the working environment for material handling operations and has gained great trust in the market. The air driven design provides less risk of explosion by sparks, and it is compact, lightweight, easy to handle, and powerful. With a wide product range from 140 kg to 30 tons, the TOKU air chain block meets various needs such as mining, shipbuilding, petrochemical plants, and assembly plants. One of the greatest features of TOKU is that one company can manufacture and supply various pneumatic tools required by general industries such as air chain blocks.



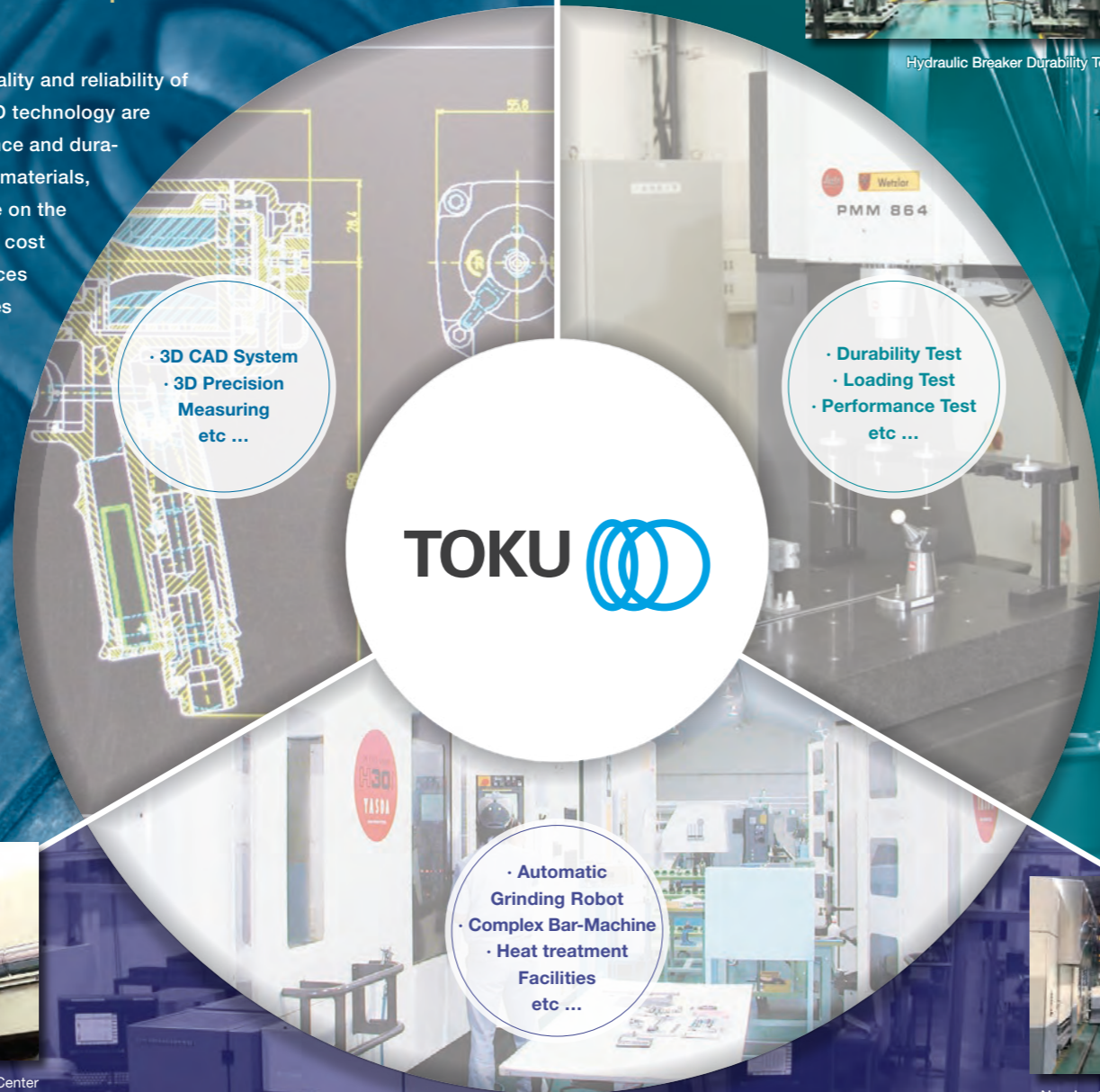
Research & Development

The source of TOKU's quality is the integrated development from concept to design and commercialization.

Continuous research and development provide the quality and reliability of the TOKU brand. Products designed by the latest CAD technology are only commercialized after passing through performance and durability tests. Furthermore, we work on improvement of materials, processing technology, and production lines, and take on the challenge of achieving both quality improvement and cost reduction. In addition, we constantly listen to the voices of users and improve existing products. TOKU provides environment-friendly and ergonomic products to the market.



Stress Analysis by 3D CAD System



Manufacturing

Balancing quality and cost is an eternal theme in the manufacturing department. TOKU sets top priority to produce high quality products. We have worked on this theme from an early stage, saving labor and improving productivity by promoting automated production and robotization. At the same time, machining to heat treatment of parts are all performed within the factory. In particu-

TOKU achieves both quality and cost control through in-house production including heat treatment and the promotion of automation.

lar, heat treatment greatly affects the performance and durability of air tools and hydraulic breakers. TOKU has an independent heat treatment department and has accumulated advanced technology and know-how. In addition, TOKU is also focusing on building production lines with the aim of handling a wide variety of products in small lots and training multi-skilled workers.



3D Machining Center



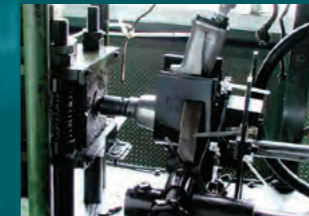
New heat treatment facility in main plant



Vacuum heat treatment facility in Incubation plant



3D Precision Measuring Instrument



Impact Wrench Durability Test



Hydraulic Breaker Durability Test

Quality Control

Thorough and strict inspections in each process enable the production of high-quality products.

TOKU's commitment to quality is reflected in thorough and strict quality inspections. We perform durability tests in the development stage, precision measurement inspections in the manufacturing process, and performance tests on all products before delivery. A comprehensive quality control system enables the production of high-quality products.

OUR FACTORY

TOKU PNEUMATIC TOOL MFG. CO.,LTD.



Nakabaru Plant
(Main Plant)



This is TokU's main plant where Air Tools for the Construction Industry, Small Hydraulic breakers and Air Chain Hoists are manufactured. Using the most updated equipment to manufacture high quality products. The Heat treatment facilities, New product development department, quality control department, and show room are located at this location. In addition, the head quarter facilities are at this plant.

· Land : 30,978m² · Plant : 14,304m²

Minobaru Plant
(Kamimine Plant)



Minobaru plant is specialized for manufacturing hydraulic breakers. Responsible for total process such as manufacturing each component, final assembly, examination and shipment.

· Land : 18,598m² · Plant : 7,318m²

Kishima Plant



Kishima Plant mainly manufactures impact wrenches and Air Grinders. It is a very important plant within the TokU manufacturing divisions. The plant is aggressively proceeding with automated line production.

· Land : 62,141m² · Plant : 8,475m²

Incubation Plant



Incubation Plant is an exclusive manufacturer of parts and is equipped with the latest hightech machines and facilities.

· Land : 18,368m² · Plant : 6,481m²

Kiyama Plant



Kiyama plant was built in 2011. It is equipped with large scale of CNC machines for making parts of large hydraulic breakers. It has several injection forming machines for making plastic parts such as mufflers of air breakers.

· Land : 30,380m² · Plant : 3,322m²

Aiming to improve quality "Terakoya" is in session.

"Terakoya" is Technical Educational Center within the company

Automation may continue to progress but at the end, quality is determined by the five senses of a human being. The "Terakoya" teaches the basics of machining, and new employees are taught at the main factory by Senior machinists before they are assigned to a position in the production line.



Hydraulic Products

Hydraulic Breakers



TNB-3MB



TNB-5M



TNB-6E



TNB-7J



TNB-151LU2



TNB-30K



TNB-40K



TNB-400LU2

Pneumatic Products

CONSTRUCTION & MINING



[Pick Hammer]



TCA-7

[Concrete Breaker]



TCB-200

[Paving Breaker]



TPB-40SV



TPB-73



TPB-90

[Chipping Hammer]



AA-1.3B



THA-3B



TCH-3

[Rotary Hammer]



TH5-S

[Rock Drill]



TJ-15SV



TJ-20SV

[Tamper]



T-6

PRODUCT LIST

- Pick hammer
- Concrete breaker
- Paving breaker
- Chipping hammer
- Clay Digger
- Trencher
- Rock drill
- Rotary hammer
- Tamper
- Sand rammer
- Air auger drill

Pneumatic Products

AUTOMOTIVE & GENERAL INDUSTRY



[Impact Wrench]

3/8" & 1/2" SQ



MI-14S



MI-16S

1/2" SQ



MI-17C

3/4" SQ



MI-20S

1" SQ



MI-38EXL



MI-5000GL

[Ratchet Wrench]



MR-2209C



MR-2410B

[Straight Grinder]



TSG-3F



TSG-6S

[Grinder]



TG-25ZII

[Angle Grinder]



TAG-40FRH

[Hammer]



BRH-3

[Needle Scaler]



N-200

[Drill]



MD-3311B

[Flux Chipper]



TFC-200

PRODUCT LIST

- Impact wrench
- Hammer

- Impact driver
- Drill

- Driver
- Scaling hammer

- Ratchet wrench
- Needle scaler

- Grinder
- Flux chipper

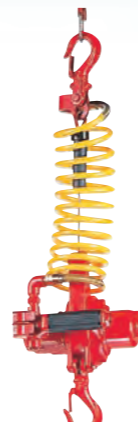
- Sander

Air Hoist

MATERIAL HANDLING



[Manipulator]



TMM-140A

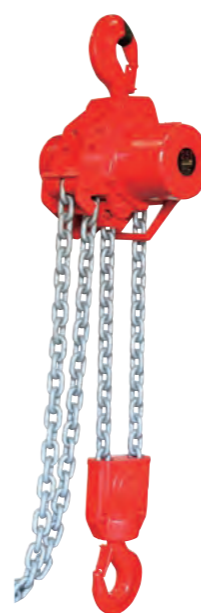


TMH-3000C

[Air Hoist]



TCR-250ME



TMH-25



TCS-500C



TCR-500C



TCR-2000P2

PRODUCT LIST

Manipulator

TCS series air hoist

TMH series air hoist

TCR series air hoist

TMTCR series air trolley hoist

TMTMH series air trolley hoist

■ Lifting Capacity: 140kg – 30,000kg

BUSINESS COMMUNICATION

For Development of the Toku Brand Name

- To become a supplier with attractive features -



Toku Pneumatic Co., Ltd has been supplying Toku brand products since 1955, which are manufactured by Toku Pneumatic Tool Mfg. Co., Ltd. and Yamada Iron Works. We have 7 sales branch offices and 2 warehouses in Japan for sales and after-sales service. The International Division was founded to develop the sales to overseas in 1968. Presently, we have a distribution network in over 60 countries, and "Toku" is now recognized as a global brand name. During this time, we have developed hydraulic breakers, and today, we stand as one of the leading manufacturers for both pneumatic and hydraulic products in the construction industry. On the other hand, Toku has affiliated with one of the most prestigious worldwide pneumatic tool manufacturers for automo-

tive tools, Chicago Pneumatic. We have diversified our business and established an international position as a supplier of impact wrenches. We are also actively challenging the market development of new industrial tools to diversify and expand our business fields. With the internationalization of the market, it has become necessary to expand the sales network around the world and establish a service network. In 2010, Toku America Inc was founded in Cleveland OH, USA for the purpose of increasing sales and offering service of hydraulic breakers and attachments. We will continue to aggressively develop our business in the globalizing market. Entering the 21st century, it is necessary to have a distinctive product lineup such as

sound-proof, vibration-proof, compact and light weight products to meet the needs of advanced users. In response to these demands, we will continue to develop TOKU brand products as high-quality, high-performance and distinctive tools with stronger international competitiveness.



Major trading countries

- U.S.A •Canada •Mexico •Guatemala •Cuba •Dominica •Colombia •Peru •Chile •Argentina •Brazil •United Kingdom •Ireland •France •Italy •Belgium •Netherlands •Germany •Switzerland •Austria •Spain •Portugal •Greece •Denmark •Sweden •Norway •Turkey •Kenya •South Africa •Egypt •Jordan •Saudi Arabia •Oman •United Arab Emirates •Kuwait •Bahrain •Qatar •Pakistan •India •Sri Lanka •China •Thailand •Vietnam •Cambodia •Malaysia •Singapore •Indonesia •Philippines •Taiwan •South Korea •Australia •New Zealand

Domestic Sales Network

<https://www.toku-net.co.jp/en/>

Head office

- International sales headquarter
- Domestic sales headquarter
- Kyusyu branch

FUKUOKA

- 1 Hiroshima branch
- 2 Osaka branch
- 3 Nagoya branch
- 4 Tokyo branch and distribution center
- 5 Tohoku branch
- 6 Sapporo branch



Aiming for a new development by making full use of technological and information capabilities

In 1937, Toku Pneumatic Tool Manufacturing Co., Ltd. was founded and since then, Toku has become a representative manufacturer in the pneumatic tool industry in Japan. In 1955, Toku Pneumatic Co., Ltd. was founded to expand the business in Japan as well as overseas. Toku Pneumatic Tool Mfg. Co., Ltd., Yamada Iron Works Co., Ltd. and Toku Pneumatic Co., Ltd. will continue to work with and keep a common business principle to capture the market needs and develop distinctive tools.



TOKU PNEUMATIC CO.,LTD.

< OUTLINE >

Establishment: Feb. 1955
Capital (Paid): 200 Million JPY
Representative Director / President: Kazuyoshi Tsuge
Employees: 85
Main Banks: MUFG Bank, Ltd. / Mizuho Bank, Ltd. / The Bank of Fukuoka, Ltd.

TOKU AMERICA INC.

Establishment: Apr. 2010
Capital: 555,000 USD
President: David Nakamura
Employees: 13

< HISTORY >

- 1955 Feb.** ▶ Established Toei Trading Co., Ltd. in Osaka separating from Toku Pneumatic Tool Mfg. Co., Ltd. Sales Dept.
- 1958 Apr.** ▶ Changed the company name to Toku Pneumatic Co., Ltd. and moved the head office to Reizen-Cho in Fukuoka also established sales offices in Fukuoka, Osaka and Tokyo.
- 1962 Apr.** ▶ Established sales offices in Hiroshima and Sapporo.
- 1964 Apr.** ▶ Established sales office in Nagoya.
- 1973 Oct.** ▶ Moved the International Div. from Toku Pneumatic Tool Mfg. Co., Ltd. to Toku Pneumatic Co., Ltd. Established a facility in Tokyo and at the same time, established the head quarter for the sales department in Tokyo. At this point, the domestic sales department and international division become one company. This development completely separated the manufacturing side and sales side within the company. The capital for Toku Pneumatic Co., Ltd. was increased to 100 million JPY.
- 1975 Oct.** ▶ Established a joint venture with the worlds largest pneumatic tool manufacturer, Chicago Pneumatic Tool Company at the same time increased its capital to 200 million JPY.
- 1977 Mar.** ▶ Moved the headquarters to the current address.
- 1978 Aug.** ▶ Established Tohoku sales office. For the domestic market, this became the 7th sales office establishing a complete sales and service organization.
- 1990 Jan.** ▶ Moved the international division from Tokyo to Fukuoka Headquarters. Changed the name to International Operations. Also, developed the sales headquarters.
- 1997 Jan.** ▶ Established offices in Morioka and Takamatsu.
- 2010 Apr.** ▶ Established Toku America Inc. In the suburb of Cleavland OH USA
- 2015 Jul.** ▶ Toku America set up West Coast Branch in Los Angeles.
- 2016 Sep.** ▶ Certified for ISO14001.

TOKU PNEUMATIC TOOL MFG. CO.,LTD.

< OUTLINE >

Establishment: Feb. 1937
Capital: Authorized: 560 Million JPY
 Paid-up: 332.5 Million JPY
Chairman: Masaaki Nagatomi
Representative Director / President: Tatsuichiro Tokimasa
Employees: Total 261
Main Banks: MUFG Bank, Ltd. / Mizuho Bank, Ltd. / The Bank of Fukuoka, Ltd. / The Nishi-Nippon City Bank, Ltd.

< HISTORY >

- 1937 Feb.** ▶ Started factory at Takeshita in Fukuoka, to run repair job on Rock-Drill for mining usage to meet the request from local mining companies as a limited partnership with paid-up capital on 40,000 JPY.
- 1937 Dec.** ▶ Established as limited company with authorized capital of 200,000 JPY.- (paid-up capital 50,000 JPY.-) and succeeded the enterprise.
- 1941** ▶ Purchased the land of approx. 12,000m² at Tsukiguma in Fukuoka and built Tsukiguma Factory.
- 1942** ▶ Designated as government controlled factory by ministry of maritime transportation as well as by ministry of munitions.
- 1945 Apr.** ▶ Due to forced removal order, moved factory to Chikushi in Fukuoka.
- 1945 May** ▶ Bought Shigeki Metal Plating Works in Fukuoka and ran metal plating job for special divisions.
- 1946 Aug.** ▶ Resumed production of air tools for mining usage.
- 1958 Apr.** ▶ Sales Department became independent into Toku Pneumatic Co.,Ltd. (Paid-up capital was 3 million JPY in the beginning and now raised up to 200 million JPY) to which business was transferred.
- 1962 Mar.** ▶ Purchased a land of approx. 30,000m² at Nakabaru-Machi of Miyaki-Gun in Saga and built Saga Plant, on the basis of Saga ordinance for luring plants.
- 1963 Apr.** ▶ Completed the first Saga Plant and full operation started.
- 1965 Oct.** ▶ Established New Metal Plating in Hakata-Ku, Fukuoka and started full production.
- 1969 Jun.** ▶ Moved a head office from Mangyouji, Fukuoka to Nakabaru-Machi, Saga.
- 1972 Nov.** ▶ Purchased the land of approx. 60,000m² in the industrial sections in Kishima-Gun, Saga and built a new plant. (Kishima Plant)
- 1973 Oct.** ▶ Completed Kishima Plant to start full operation.
- 1975 Apr.** ▶ Made Metal Plating Plant independent as a separate company.
- 1975 Aug.** ▶ Increased capital paid-up to 210 million JPY.
- 1979 Sep.** ▶ Obtained the land in Saga Eastern Center industrial area of 18,598m² cultivated by local development corporation, Kamimine Plant.
- 1981 Oct.** ▶ Increased capital paid-up to 250 million JPY.
- 1983 Apr.** ▶ Completed Kamimine Plant to start full operation.
- 1984 Oct.** ▶ Completed Minobaru Plant to start full operation.
- 1985 Mar.** ▶ Obtained the land in Hirokawa Center industrial area of 18,368m² by local government corporation.
- 1991 Jul.** ▶ Completed Incubation (Hirokawa) Plant to start full operation.
- 1993 Mar.** ▶ Increased capital paid-up to 322.5 million JPY.
- 1999 Nov.** ▶ Minobaru Plant was certified for ISO-9002.
- 2001 May** ▶ Nakabaru Plant was certified for ISO-9001.
- 2001 Jun.** ▶ Kishima Plant was certified for ISO-9002.
- 2002 Jun.** ▶ Certified for ISO-14001.
- 2011 Mar.** ▶ Kiyama Plant was built and started operation.

EISIN CO.,LTD.

< OUTLINE >

Establishment: Nov. 1986
Inauguration of business: Apr. 2003
Capital: 50 Million JPY
Representative Director: Tatsuichiro Tokimasa
Employees: 8
Banks: MUFG Bank, Ltd. / Sumitomo Mitsui Banking Corporation / The Bank of Fukuoka, Ltd.

< HISTORY >

- 2003 Apr.** ▶ EISIN service center was founded.
- 2008 Apr.** ▶ Shanghai Toku Machinery was established for the production of hydraulic breaker bracket in Shanghai city in China.

YAMADA IRON WORKS CO.,LTD.

< OUTLINE >

Establishment: Apr. 1959
Capital: 20 Million JPY
Representative Director / President: Yoichi Koga
Employees: 35
Main Banks: MUFG Bank, Ltd. / The Nishi-Nippon City Bank, Ltd.

< HISTORY >

- 1959 Apr.** ▶ As a part of Toku Pneumatic Tool Mfg. Co., Ltd., the company was founded Onojo-City in Fukuoka and started to manufacture Pneumatic Products.
- 1962 Jan.** ▶ With a capital of 10 Million JPY, the company was changed to Yamada Iron Works Co., Ltd.
- 1967 Apr.** ▶ The company moved to a new factory to Nakabaru-Machi, Miyaki-Gun in Saga.
- 1973 Jan.** ▶ Increased capital to 20 Million JPY.
- 1978 Aug.** ▶ A second plant was built in Nakabaru-Machi, Miyaki-Gun, Saga.
- 1993 Apr.** ▶ Company moved to a new plant in Kitashigeyasu-Machi, Miyaki-Gun, Saga.
 - Land Area: Approx. 12,000m²
 - Factory Space: Approx. 3,000m²
 - Warehouse Space: Approx. 300m²



YAMADA IRON WORKS CO.,LTD.

TOKU PNEUMATIC CO.,LTD.

[International Operations]

3-4, 4-Chome Katakasu, Hakata-Ku,
Fukuoka, 812-0043, Japan
Phone: +81-92-431-0401
Fax: +81-92-431-1014
E-mail: int-op@toku-net.co.jp

TOKU AMERICA INC.

3900 Ben Hur Avenue Unit3
Willoughby, OH, 44094, USA
Phone: +1-440-954-9923
Fax: +1-440-954-9929
<https://www.toku-america.com/>

TOKU PNEUMATIC TOOL MFG.CO.,LTD.

[Head Office / Head Plant]

5733, Minobaru, Miyaki-Machi,
Miyaki-Gun, Saga, 849-0102, Japan
Phone: +81-942-94-3166
Fax: +81-942-94-3169

EISIN CO.,LTD.

[Head office]

Toku Reisen Building 2F, 6-1, Reisencho,
Hakata-ku, Fukuoka, 812-0039, Japan
Phone: +81-92-272-3541
Fax: +81-92-272-3539

YAMADA IRON WORKS CO.,LTD.

[Head Plant]

4397-1, Shirakabe, Miyaki-Machi,
Miyaki-Gun, Saga, 849-0111, Japan
Phone: +81-942-89-2242
Fax: +81-942-89-1045



<https://www.toku-net.co.jp/en/>

